

Get up to date on our latest panel discussions

- [Advances in vitro Models of Inhalation Toxicology](#)
- [Preclinical Models of Smoke Exposure](#)
- [Precision Cut Lung Slices \(PCLS\): Effective ex vivo Platform for Lung Physiology](#)
- [Translational Preclinical Models Of COVID-19](#)

Discuss your research goals with one of our cardiopulmonary experts!

Meet our new *in vitro* and *ex vivo* solutions!



The expoCube

Efficient, uniform, and precise exposure of particulates onto target cells and tissues

[Learn more](#)



The physioLens

Automated microscopy and dosing platform for Precision Cut Lung Slices

[Learn more](#)



格林科技有限公司

Good Education and Research Instruments Network

www.gerin.com.tw office@gerin.com.tw

台南 : 06-290-1890 台北 : 02-2696-2955

Catch up on the latest pulmonary research and updates!



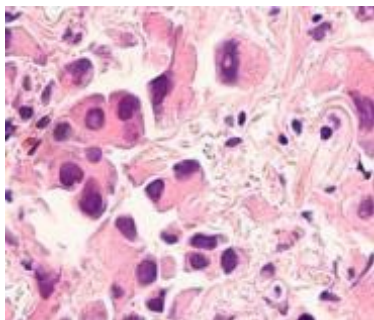
Learn more about translational FEV/FVC measurements in preclinical modeling

[Read more](#)



Reversal of emphysema by restoration of endothelial cells

[Read more](#)



Cigarette smoke negatively affect pulmonary structure and function in an Apoe model

[Read more](#)



Free Webinar: Evaluating Dupilumab and Anti-IL-5 in Preclinical Animal Models [Register Now!](#)





PCLS: Effective platform for lung physiology

[Read more](#)



Advantages of air liquid interface exposure over submerged cultures

[Read more](#)



Cigarette Smoke in an APOE- Model

[Read more](#)



The Relationship Between e-Cigarette Exposure, Sex Steroids, and COVID-19

[Read more](#)



SARS-COV-2 Mouse Model Development

[Read more](#)